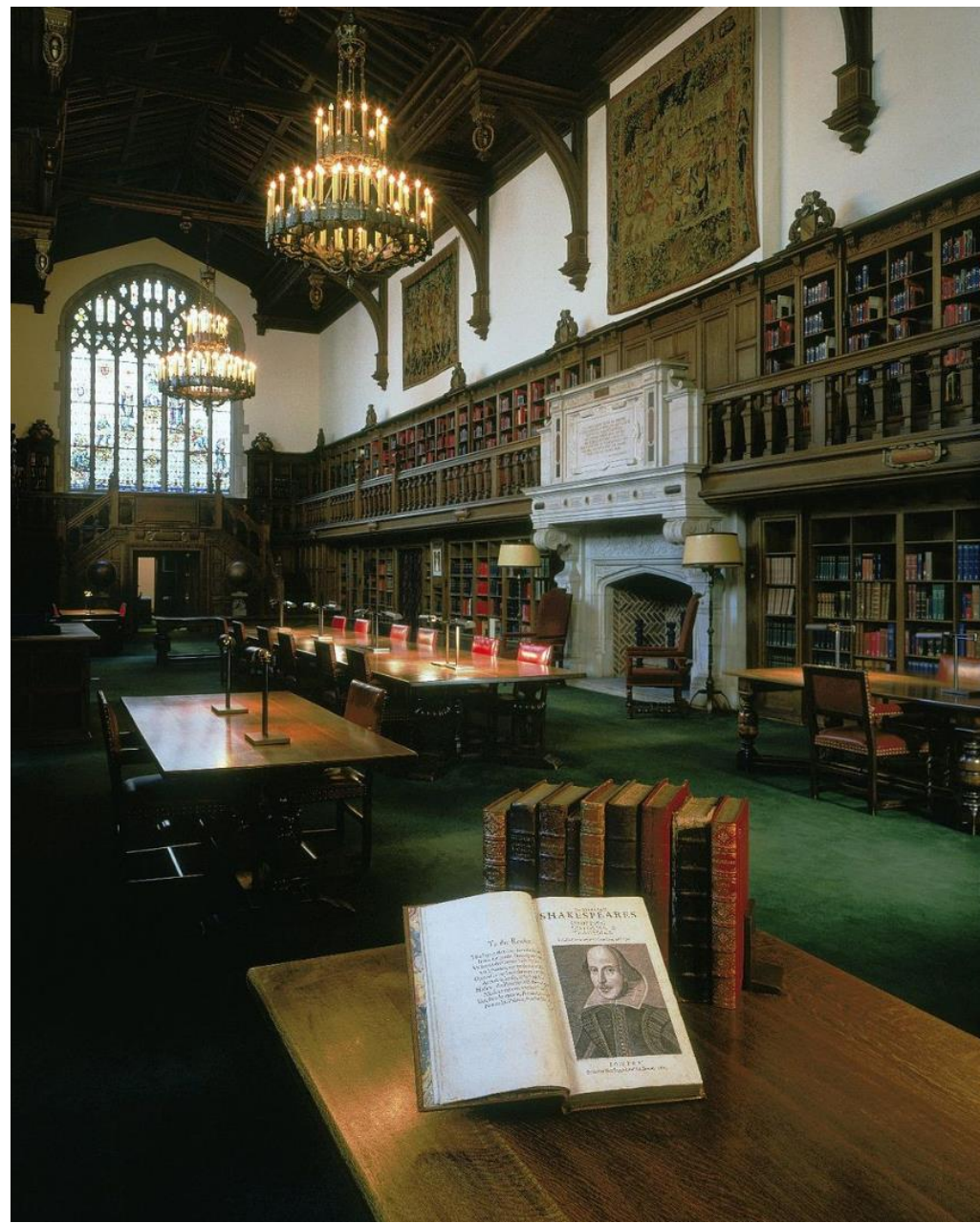
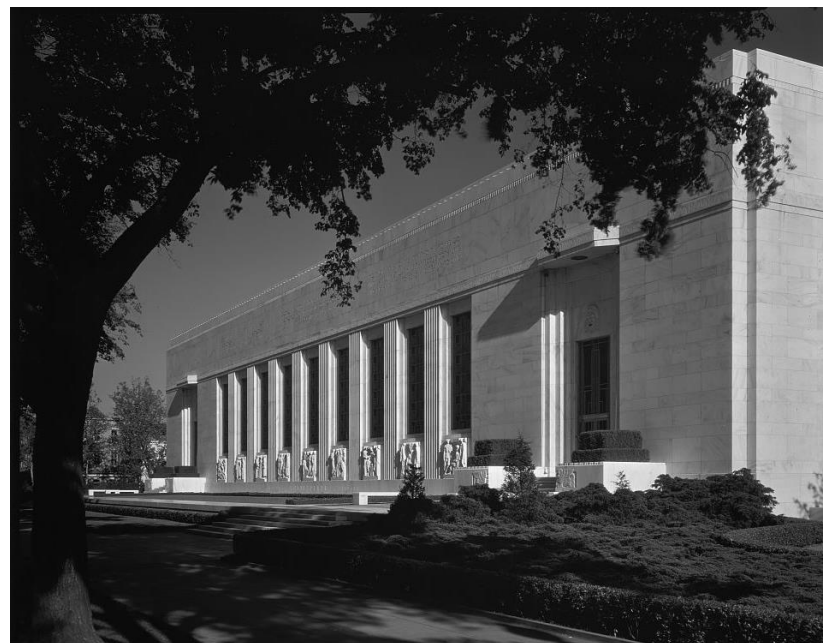
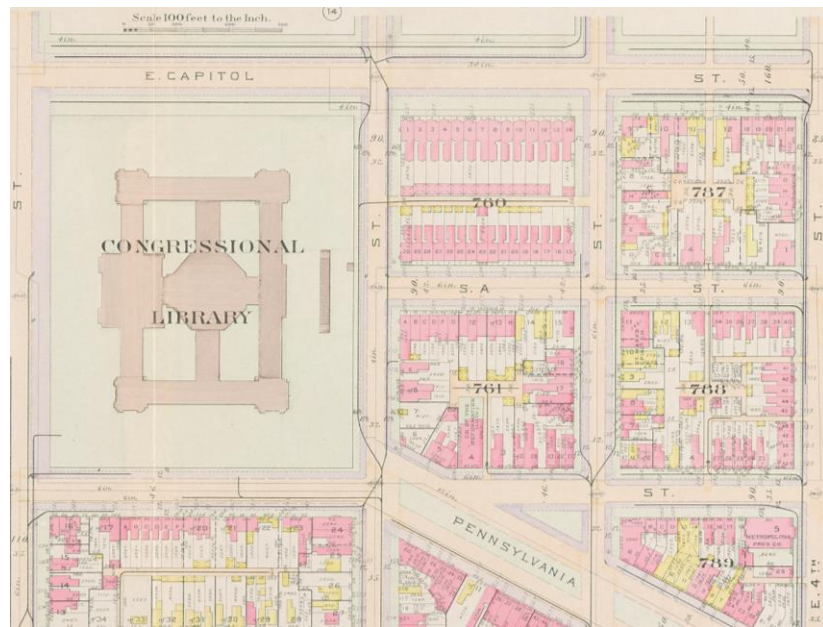


THE FOLGER SHAKESPEARE LIBRARY

## U.S. Commission of Fine Arts Permit Review – Follow-up

16 April 2020



## INTRODUCTION

THE FOLGER SHAKESPEARE LIBRARY - U.S. COMMISSION OF FINE ARTS

16 APRIL 2020 | © KIERANTIMBERLAKE

# Design Principles:

1. **COMMON ACCESS AND ENTRY FOR ALL** – Provide single, clear, generous, and universally accessible entrance for all visitors.
2. **PUBLIC SPACE TO BE PUBLIC** – Design to signify access and welcome to the grounds, particularly where modifications are proposed in public space.
3. **CIVIC STREETScape** – Minimize projections to respect established view corridors, alignments, and greenswards, especially along East Capitol Street frontage.
4. **PRESERVATION OF HISTORIC ELEVATION** – Minimize visible, above-grade disruptions to views of the historic building, especially from East Capitol Street.
5. **CONTINUITY OF GROUND PLANE** – Retain and / or reference existing ground plane at corners of the historic building.
6. **GEOMETRIC SIMPLICITY** – The design should be sympathetic to and extend the orthogonality of the historic Cret building.





U.S. COMMISSION OF FINE ARTS  
ESTABLISHED BY CONGRESS 17 MAY 1910

27 February 2020

Dear Dr. Witmore:

In its meeting of 20 February, the Commission of Fine Arts reviewed a final design for alterations to the site and building of the Folger Shakespeare Library at 201 East Capitol Street, SE (case number SL 20-067), an outstanding example of the work of the prominent early 20th-century architect Paul Cret. The Commission did not take an action on the final design, requesting further documentation and the redesign of several components of the proposal.

The Commission members reiterated their support for the project to create new, universally accessible building entrances and exhibition spaces below a reconstructed terrace plinth, although they continued to express regret that the historic entrance sequence to the monumental doors on the terrace will no longer be actively used. They commented generally that the design has been developed to clarify the pedestrian routes to the new lower-level entrances, and they found that some of the proposed wayfinding elements now appear unnecessary. Noting that the closure of the historic doors will be indicated by the proposed new benches in front of them, the Commission members recommended eliminating the segments of handrail that would extend across the top of the steps to each side of the terrace in order to minimize visible disruptions to frontal views of the Cret building. They also recommended the elimination of two types of wayfinding signs at the front of the building: the railing-mounted signs reading "entrance" at the terrace stairway, and the small monument signs adjacent to the sidewalk. For the design of the signs, they recommended simplification of the range of typography selected for the various proposed types of text, with a single sans-serif typeface used for wayfinding and serif typefaces used for the honorific identity signs and the quotations. They also recommended reducing the number of materials used on the proposed pylon signs at the east and west entrances in order to avoid using marble merely as a minor accent. The Commission members expressed concern about the materials and design of the northeast and northwest corners of the historic Cret building that would be exposed at the new excavated entrance plazas. They questioned the choice of concrete as the finish material for the base of the marble building volume, a treatment that they found could appear like exposed underpinning; they suggested consideration of a stone such as granite, which would equally well differentiate the new construction

from the original but would be a more noble material commensurate with the character of the historic building. They also recommended that the "Juliet" balcony at the northeastern corner be less massive in appearance, redesigned with a more consistent relationship to the datum that separates the Cret building's principal storeys from the new, exposed basement walls, as seen in the base treatment at the northwestern corner. In general, they requested a full presentation of proposed samples for all exterior materials, large enough to convey their character and accompanied by detailed drawings if necessary, commenting that they were not able to complete their review of the project without these samples. Finally, the Commission members requested that the original pedestal for the Puck sculpture be incorporated in its new location.

The Commission continues to take great interest in this proposal to modify one of Washington's finest buildings, housing one of its most important cultural institutions. At your request, the submission will be held open for the completion of the final review; the Commission asked that the forthcoming presentation focus specifically on responding to the comments provided. The Commission encouraged the project team to consult with the staff prior to the submission for the next presentation; the staff is available to assist you.

Sincerely,

/s/Thomas E. Luebke, FAIA  
Secretary

Michael Witmore, Director  
Folger Shakespeare Library  
201 East Capitol Street, SE  
Washington, DC 20003  
cc: Stephen Kieran, Kieran Timberlake  
Hallie Boyce, OLIN  
Matthew Marcou, D.C. Public Space Committee  
David Maloney, D.C. Historic Preservation Office



U.S. COMMISSION OF FINE ARTS  
ESTABLISHED BY CONGRESS 17 MAY 1910

27 February 2020

Dear Dr. Witmore:

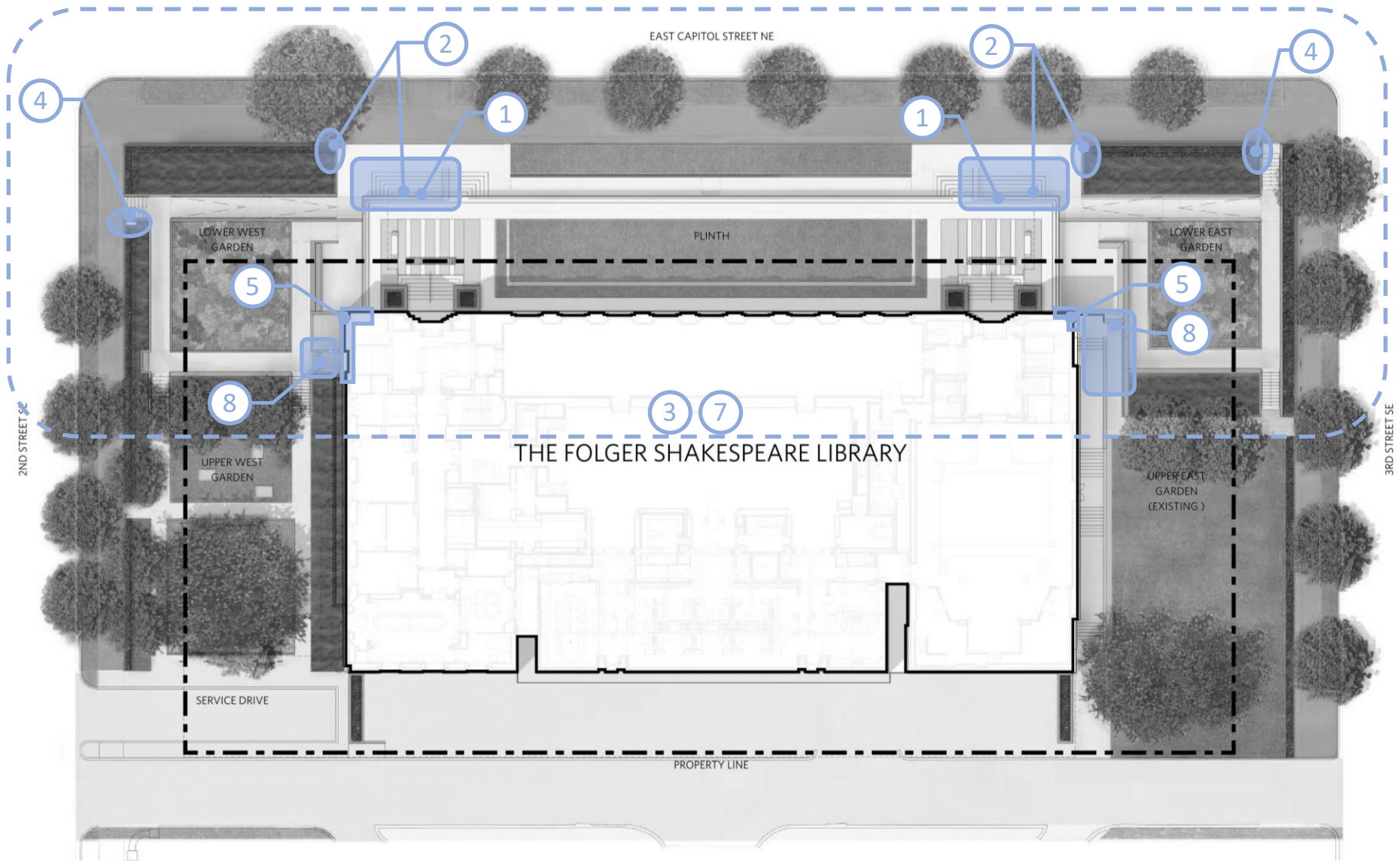
In its meeting of 20 February, the Commission of Fine Arts reviewed a final design for alterations to the site and building of the Folger Shakespeare Library at 201 East Capitol Street, SE (case number SL 20-067), an outstanding example of the work of the prominent early 20th-century architect Paul Cret. The Commission did not take an action on the final design, requesting further documentation and the redesign of several components of the proposal.

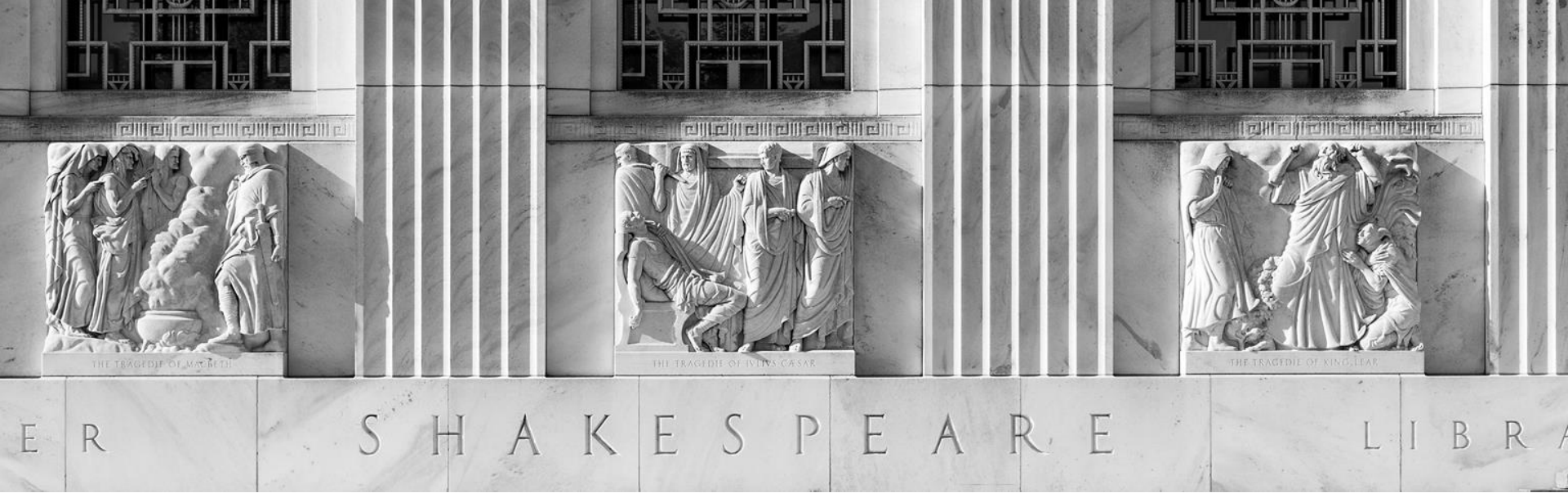
The Commission members reiterated their support for the project to create new, universally accessible building entrances and exhibition spaces below a reconstructed terrace plinth, although they continued to express regret that the historic entrance sequence to the monumental doors on the terrace will no longer be actively used. They commented generally that the design has been developed to clarify the pedestrian routes to the new lower-level entrances, and they found that some of the proposed wayfinding elements now appear unnecessary. Noting that the closure of the historic doors will be indicated by the proposed new benches in front of them, the Commission members recommended **1** eliminating the segments of handrail that would extend across the top of the steps to each side of the terrace in order to minimize visible disruptions to frontal views of the Cret building. They also recommended **2** elimination of two types of wayfinding signs at the front of the building: the railing-mounted signs reading "entrance" at the terrace stairway, and the small monument signs adjacent to the sidewalk. For the design of the signs, they recommended **3** simplification of the range of typography selected for the various proposed types of text, with a single sans-serif typeface used for wayfinding and serif typefaces used for the honorific identity signs and the quotations. They also recommended **4** reducing the number of materials used on the proposed pylon signs at the east and west entrances in order to avoid using marble merely as a minor accent. The Commission members expressed concern about the materials and design of the northeast and northwest corners of the historic Cret building that would be exposed at the new excavated entrance plazas. **5** questioned the choice of concrete as the finish material for the base of the marble building volume—a treatment that they found could appear like exposed underpinning; they suggested consideration of a stone such as granite, which would equally well differentiate the new construction

from the original but would use **6** more noble material commensurate with the character of the historic building. The **6** recommended that the "Juliet" balcony at the northeastern corner be less massive in appearance, redesigned with a more consistent relationship to the datum that separates the Cret building's principal storeys from the new, exposed basement walls, as seen in the base treatment at the northwestern corner. In general, **7** requested a full presentation of proposed samples for all exterior materials large enough to convey their character and accompanied by detailed drawings if necessary, commenting that they were not able to complete their review of the project without these samples. Finally, the Commission **8** members requested that the original pedestal for the Puck sculpture be incorporated in its new location. The Commission continues to take great interest in this proposal to modify one of Washington's finest buildings, housing one of its most important cultural institutions. At your request, the submission will be held open for the completion of the final review; the Commission asked that the forthcoming presentation focus specifically on responding to the comments provided. The Commission encouraged the project team to consult with the staff prior to the submission for the next presentation; the staff is available to assist you. Sincerely,

/s/Thomas E. Luebke, FAIA  
Secretary

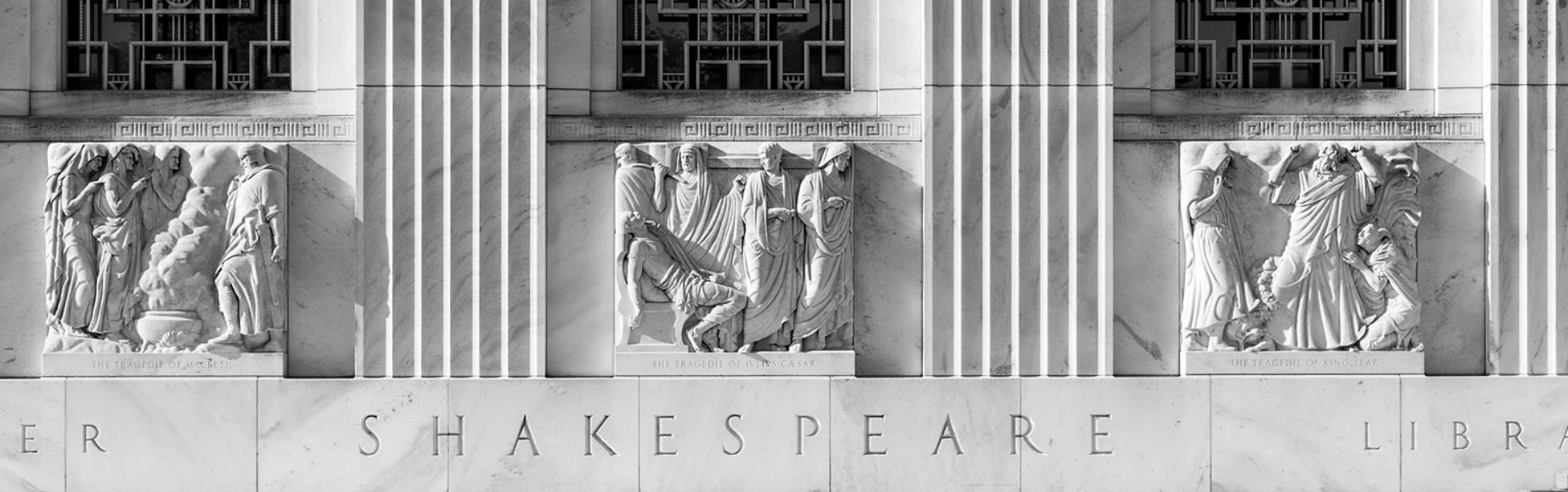
Michael Witmore, Director  
Folger Shakespeare Library  
201 East Capitol Street, SE  
Washington, DC 20003  
cc: Stephen Kieran, Kieran Timberlake  
Hallie Boyce, OLIN  
Matthew Marcou, D.C. Public Space Committee  
David Maloney, D.C. Historic Preservation Office





## Follow-up Topics

- ① ② East Capitol Frontage Railings and Signage
- ③ Typography
- ④ Pylon signs
- ⑤ Corner Treatment
- ⑥ Northeast Corner - "Juliet Balcony"
- ⑦ Materials
- ⑧ Puck Fountain



## Follow-up Topics

- ①② **East Capitol Frontage Railings and Signage**
- ③ **Typography**
- ④ **Pylon signs**
- ⑤ **Corner Treatment**
- ⑥ **Northeast Corner – “Juliet Balcony”**
- ⑦ **Materials**
- ⑧ **Puck Fountain**

“...the Commission members recommended eliminating the segments of handrail that would extend across the top of the steps to each side of the terrace in order to minimize visible disruptions to frontal views of the Cret building.”

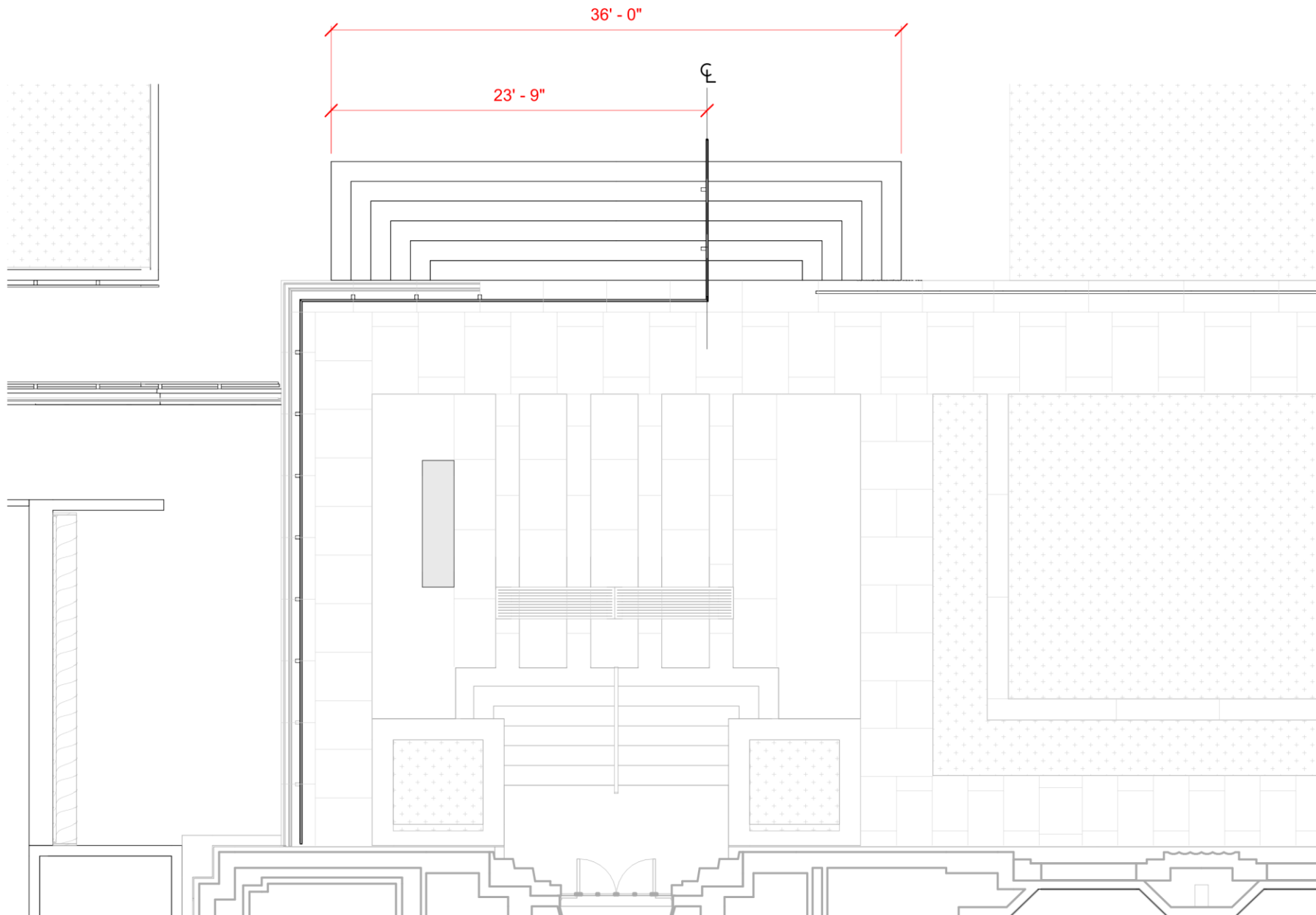
“They also recommended the elimination of two types of wayfinding signs at the front of the building: the railing-mounted signs reading “entrance” at the terrace stairway, and the small monument signs adjacent to the sidewalk.”





**PROPOSED DESIGN** VIEW FROM EAST CAPITOL STREET – AS PRESENTED ON FEBRUARY 20  
THE FOLGER SHAKESPEARE LIBRARY - U.S. COMMISSION OF FINE ARTS





**PROPOSED DESIGN** VIEW FROM EAST CAPITOL STREET – AS PRESENTED ON FEBRUARY 20  
 THE FOLGER SHAKESPEARE LIBRARY - U.S. COMMISSION OF FINE ARTS

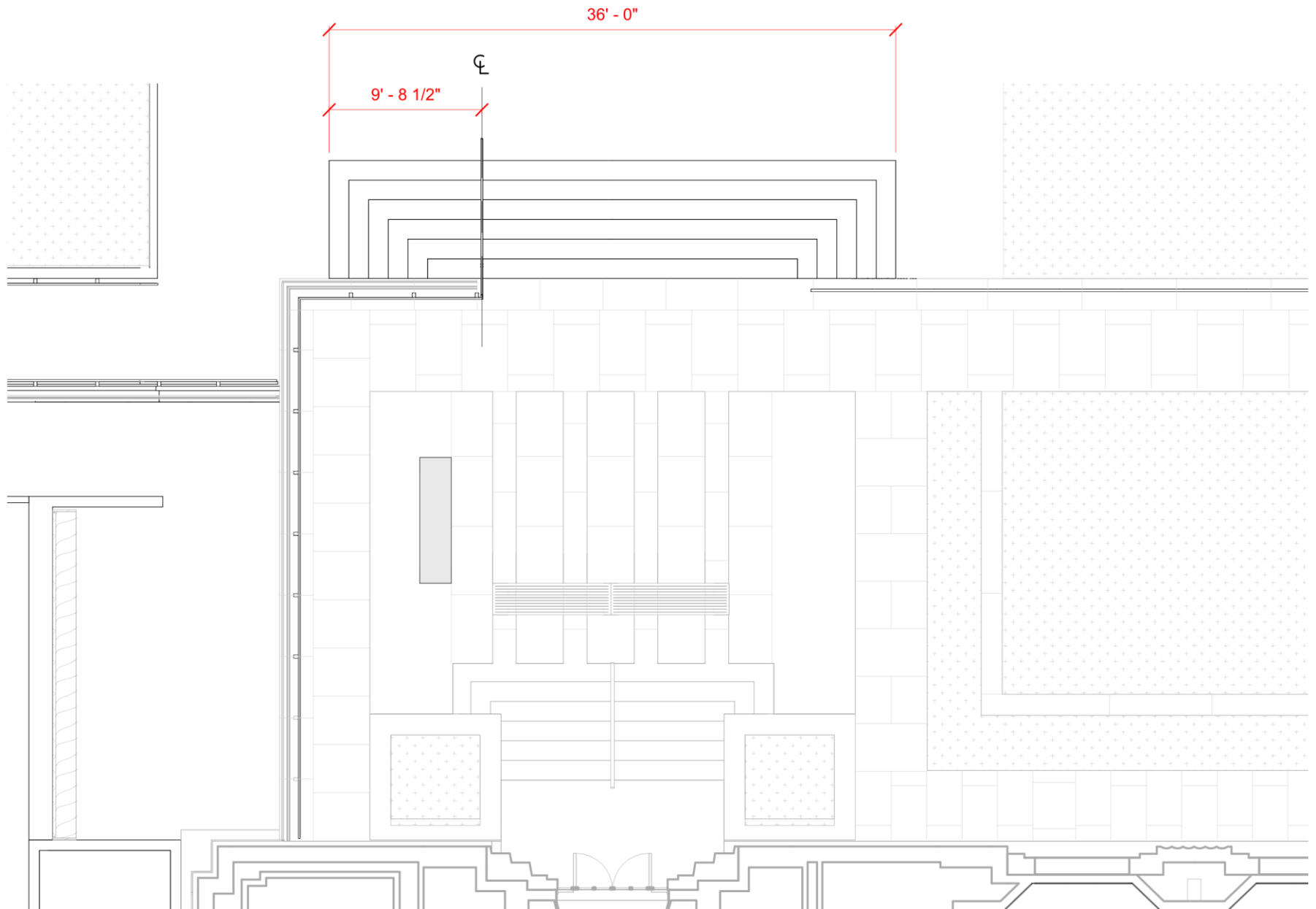




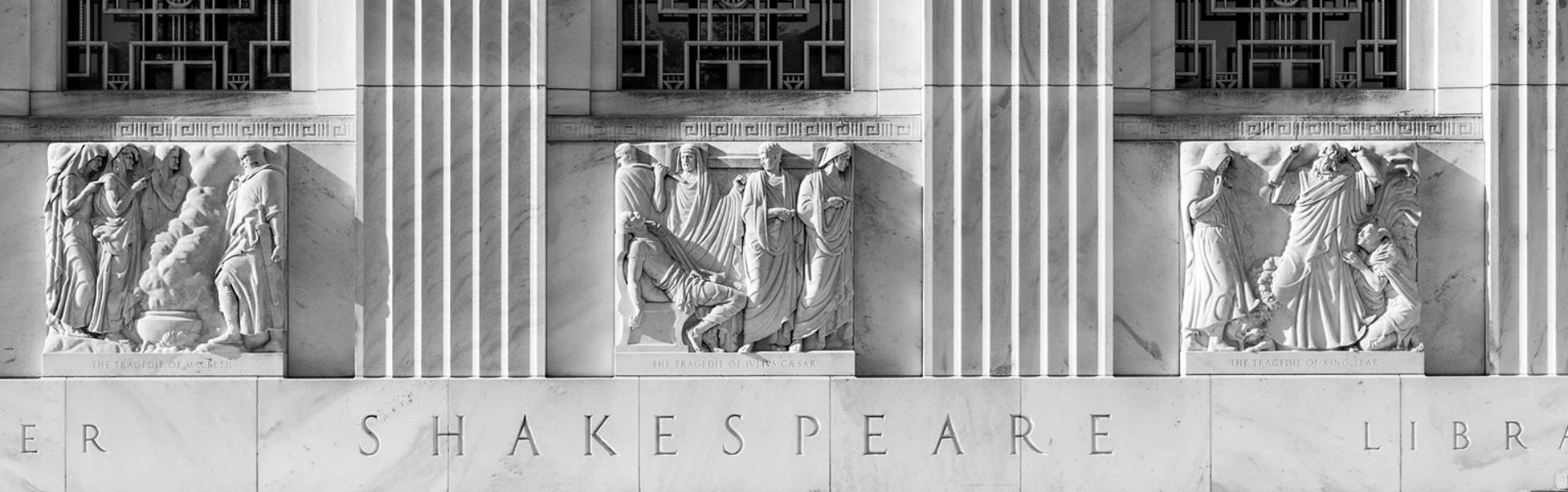
**PROPOSED DESIGN** VIEW FROM EAST CAPITOL STREET – REVISED  
 THE FOLGER SHAKESPEARE LIBRARY - U.S. COMMISSION OF FINE ARTS



16 APRIL 2020 | © KIERANTIMBERLAKE







## Follow-up Topics

- ① ② East Capitol Frontage Railings and Signage
- ③ **Typography**
- ④ Pylon signs
- ⑤ Corner Treatment
- ⑥ Northeast Corner – “Juliet Balcony”
- ⑦ Materials
- ⑧ Puck Fountain

“For the design of the signs, they recommended simplification of the range of typography selected for the various proposed types of text, with a single sans-serif typeface used for wayfinding and serif typefaces used for the honorific identity signs and the quotations.”

## TYPEFACE

### HAARLEMMER SANS

SHAKESPEARE

### MALLORY

### PUCK

FOR WHAT THOU ART  
THESE MORTALS BE  
A MIDWINTER NIGHT'S DREAM

## Practice

## APPLICATION

PRIMARY BUILDING ID



INFORMATION AND WAYFINDING SIGNAGE

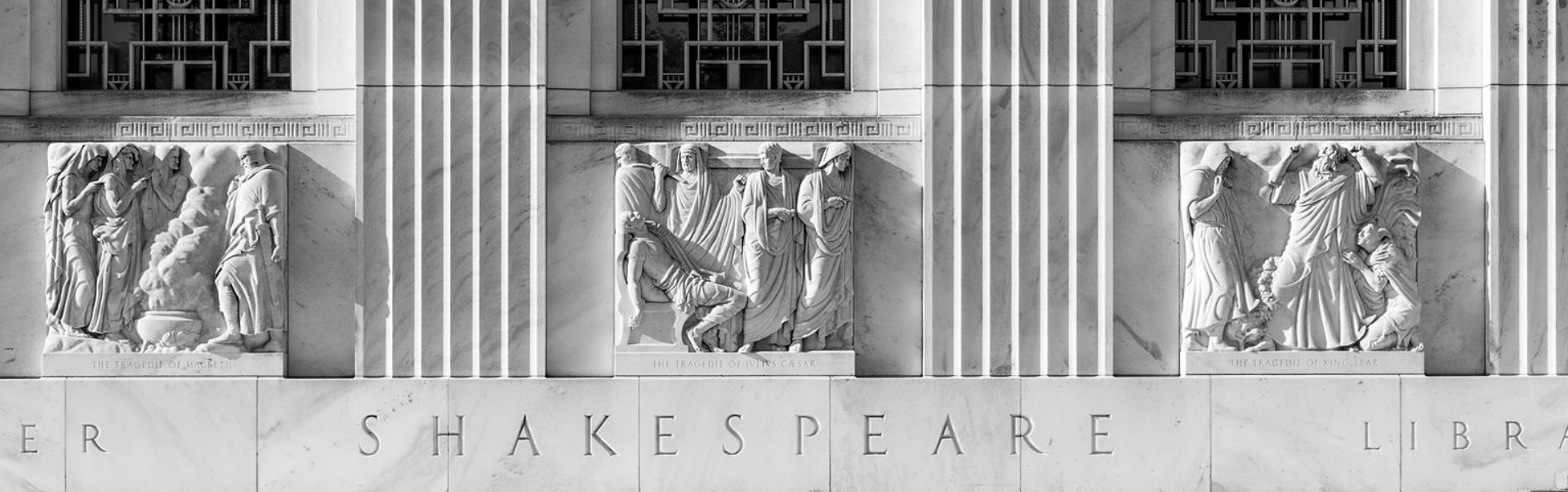


WALL QUOTATION



CURB QUOTATION





## Follow-up Topics

- ① ② East Capitol Frontage Railings and Signage
- ③ Typography
- ④ Pylon signs
- ⑤ Corner Treatment
- ⑥ Northeast Corner – “Juliet Balcony”
- ⑦ Materials
- ⑧ Puck Fountain

“They also recommended reducing the number of materials used on the proposed pylon signs at the east and west entrances in order to avoid using marble merely as a minor accent.”

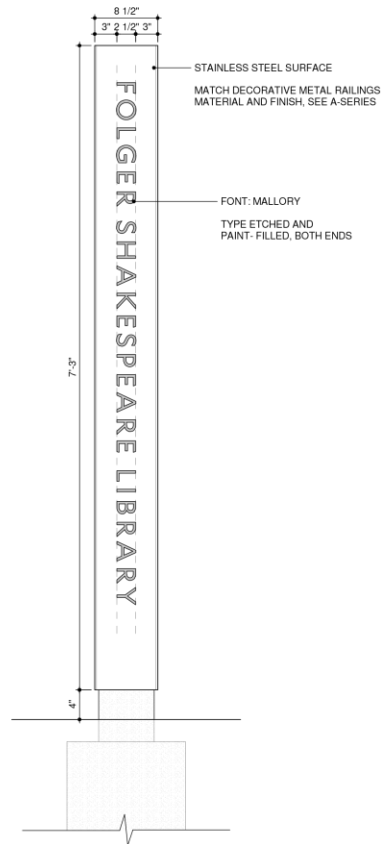
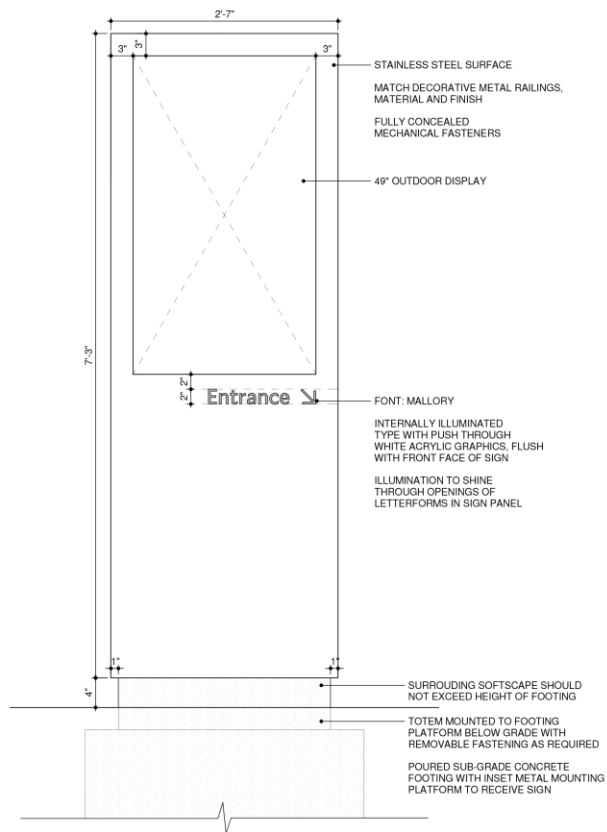




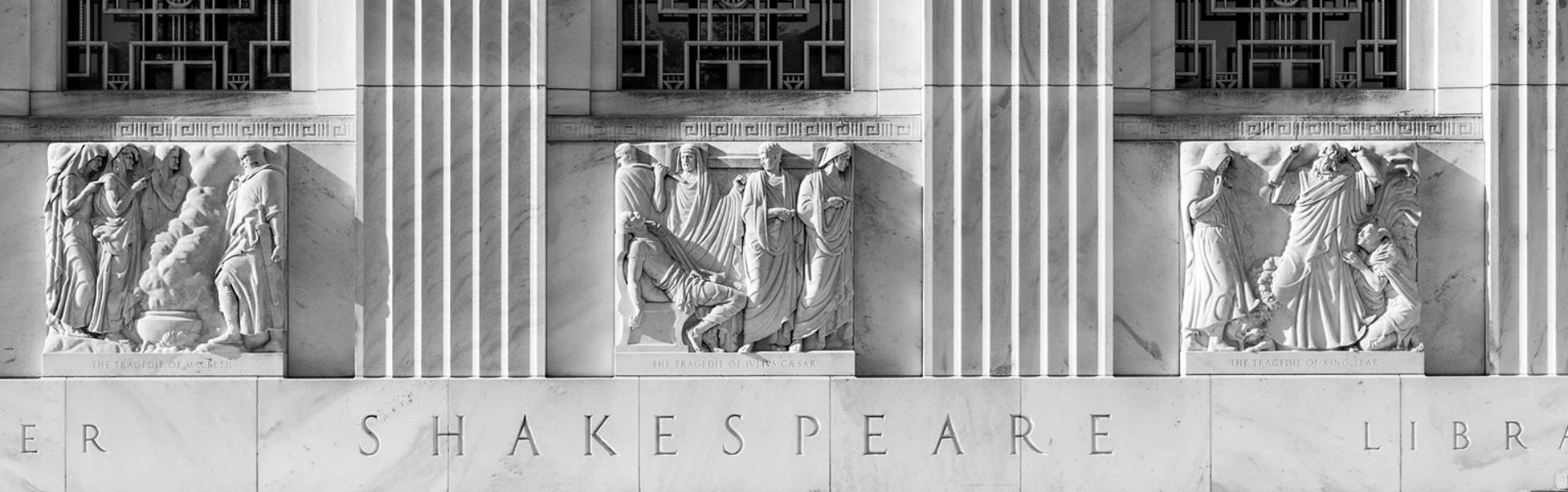
**SIGNAGE AND WAYFINDING** PROMOTIONAL TOTEM – AS PRESENTED ON FEBRUARY 20  
THE FOLGER SHAKESPEARE LIBRARY











## Follow-up Topics

- ①② East Capitol Frontage Railings and Signage
- ③ Typography
- ④ Pylon signs
- ⑤ **Corner Treatment**
- ⑥ Northeast Corner – “Juliet Balcony”
- ⑦ Materials
- ⑧ Puck Fountain

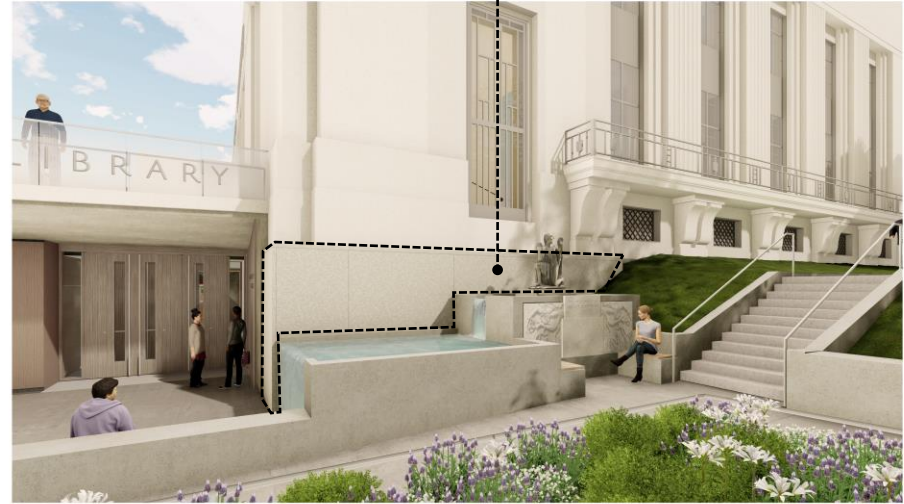
“The Commission members expressed concern about the materials and design of the northeast and northwest corners of the historic Cret building that would be exposed at the new excavated entrance plazas. They questioned the choice of concrete as the finish material for the base of the marble building volume, a treatment that they found could appear like exposed underpinning; they suggested consideration of a stone such as granite, which would equally well differentiate the new construction from the original but would be a more noble material commensurate with the character of the historic building. “

MOUNT AIRY  
GRANITE



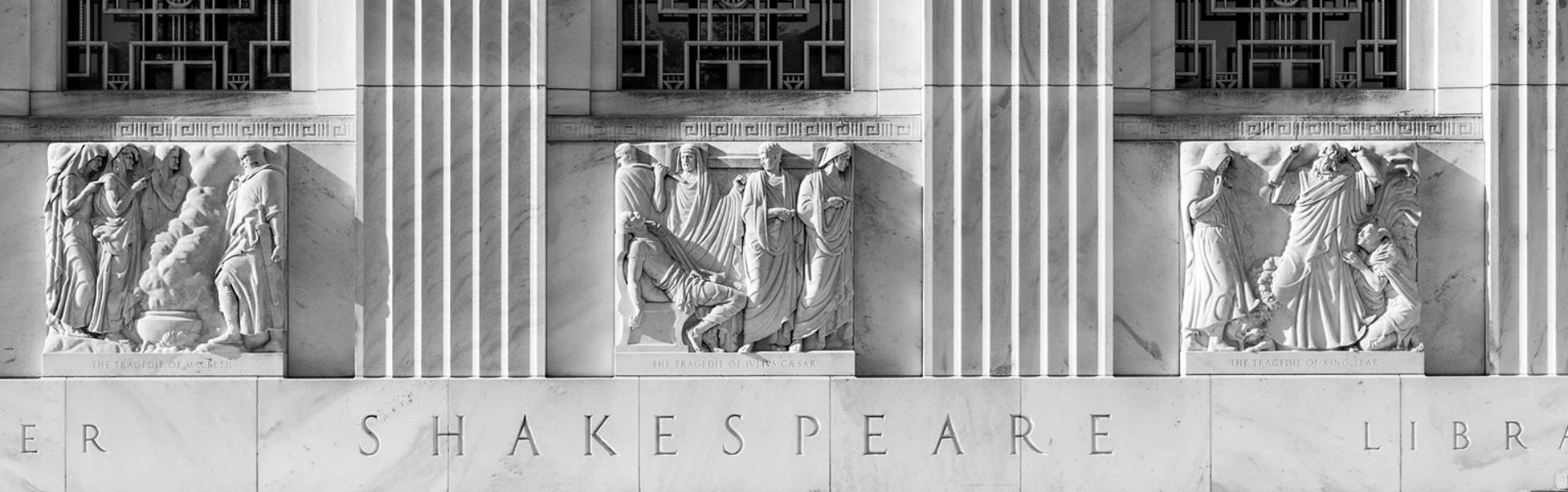
**NORTHEAST CORNER**

MOUNT AIRY  
GRANITE



**NORTHWEST CORNER**





## Follow-up Topics

- ①② East Capitol Frontage Railings and Signage
- ③ Typography
- ④ Pylon signs
- ⑤ Corner Treatment
- ⑥ **Northeast Corner - "Juliet Balcony"**
- ⑦ Materials
- ⑧ Puck Fountain

“They also recommended that the "Juliet" balcony at the northeastern corner be less massive in appearance, redesigned with a more consistent relationship to the datum that separates the Cret building's principal storeys from the new, exposed basement walls, as seen in the base treatment at the northwestern corner.”



**NORTHEAST CORNER** – AS PRESENTED ON FEBRUARY 20  
THE FOLGER SHAKESPEARE LIBRARY - U.S. COMMISSION OF FINE ARTS





**NORTHEAST CORNER – REVISED**  
THE FOLGER SHAKESPEARE LIBRARY - U.S. COMMISSION OF FINE ARTS

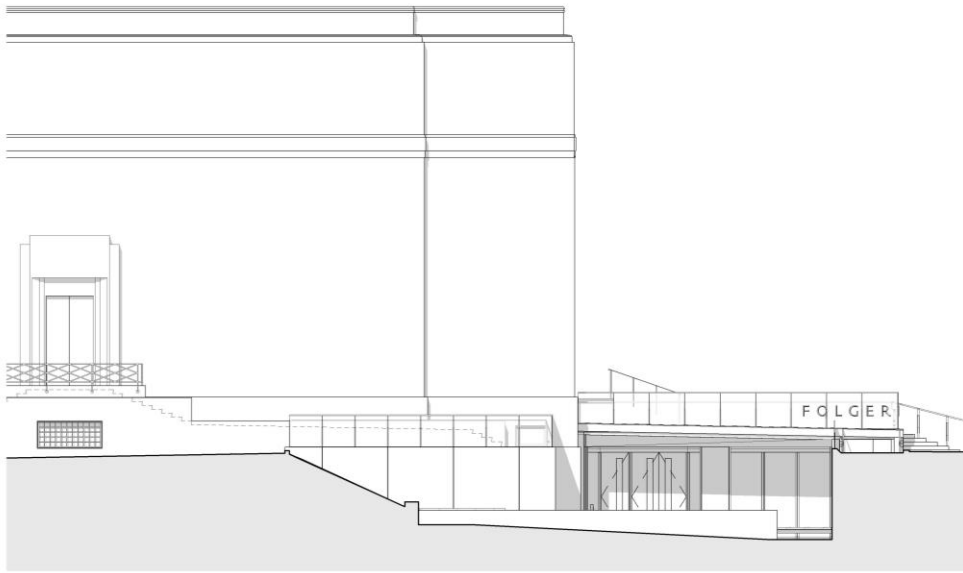


**NORTHEAST CORNER** – DETAIL FROM SCHEME PRESENTED ON FEBRUARY 20  
THE FOLGER SHAKESPEARE LIBRARY - U.S. COMMISSION OF FINE ARTS

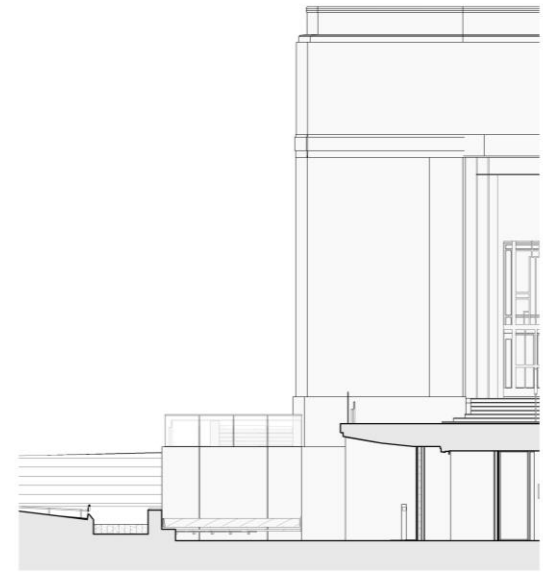




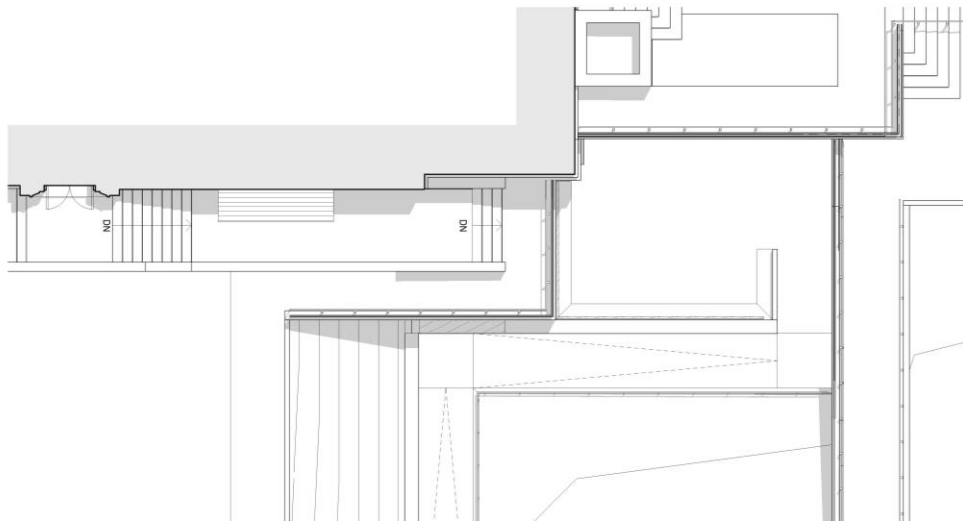
**NORTHEAST CORNER – REVISED**  
THE FOLGER SHAKESPEARE LIBRARY - U.S. COMMISSION OF FINE ARTS



EAST ELEVATION



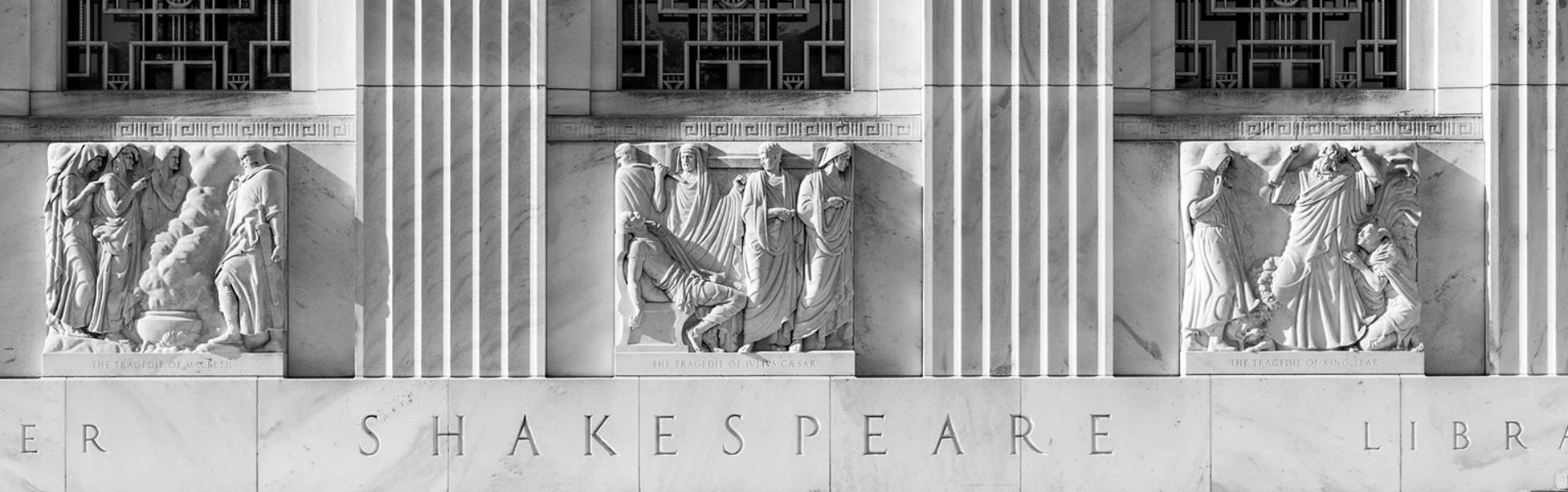
NORTH ELEVATION



PLAN

**NORTHEAST CORNER**— REVISED ELEVATIONS AND PLAN  
THE FOLGER SHAKESPEARE LIBRARY - U.S. COMMISSION OF FINE ARTS





## Follow-up Topics

- ① ② East Capitol Frontage Railings and Signage
- ③ Typography
- ④ Pylon signs
- ⑤ Corner Treatment
- ⑥ Northeast Corner – “Juliet Balcony”
- ⑦ **Materials**
- ⑧ Puck Fountain

“In general, they requested a full presentation of proposed samples for all exterior materials, large enough to convey their character and accompanied by detailed drawings if necessary, commenting that they were not able to complete their review of the project without these samples.”







BLUESTONE  
(not pictured)



BASALT-SEEDED  
CONCRETE



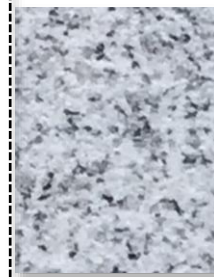
GEORGIA  
WHITE  
MARBLE



ACID-ETCHED /  
SANDBLASTED  
CONCRETE



IPE



MOUNT AIRY  
GRANITE



WHITE OAK



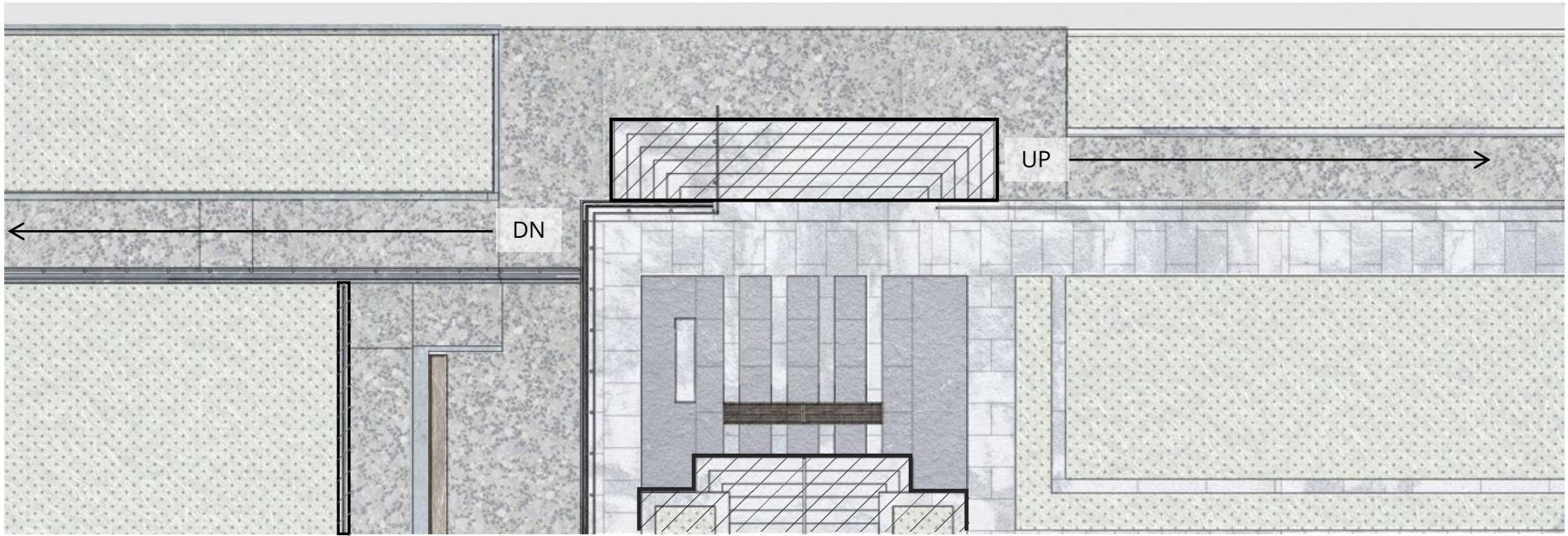
STAINLESS  
STEEL

## MATERIALS

THE FOLGER SHAKESPEARE LIBRARY - U.S. COMMISSION OF FINE ARTS

16 APRIL 2020 | © KIERANTIMBERLAKE





ACID-ETCHED/  
SANDBLASTED  
CONCRETE WALLS



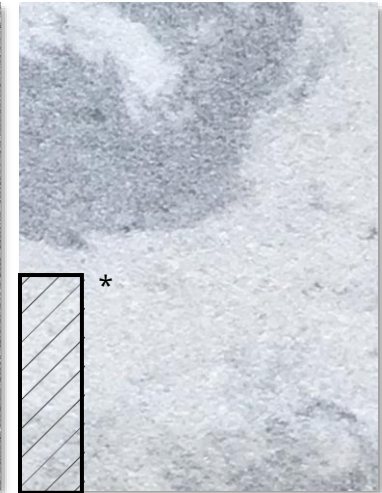
BASALT-SEEDED  
CONCRETE PAVEMENT



IPE BENCHES



BLUESTONE PAVERS



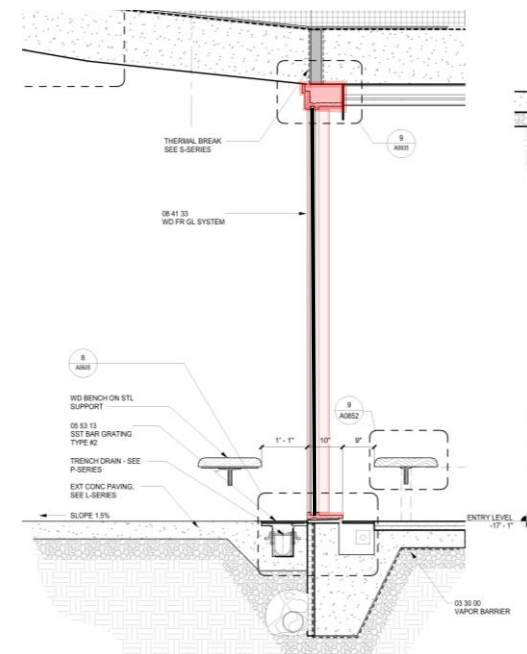
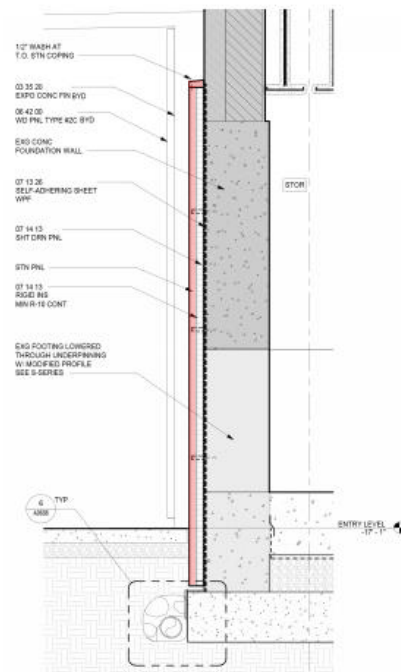
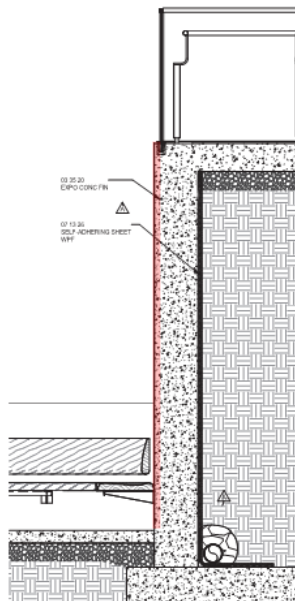
GEORGIA WHITE MARBLE  
PAVERS, CURBS, AND STAIRS  
\* SALVAGED MATERIAL

## MATERIALS

THE FOLGER SHAKESPEARE LIBRARY - U.S. COMMISSION OF FINE ARTS

16 APRIL 2020 | © KIERANTIMBERLAKE





ACID-ETCHED/ SANDBLASTED  
CONCRETE WALLS AND OVERHANG



MOUNT AIRY GRANITE WALL  
CLADDING

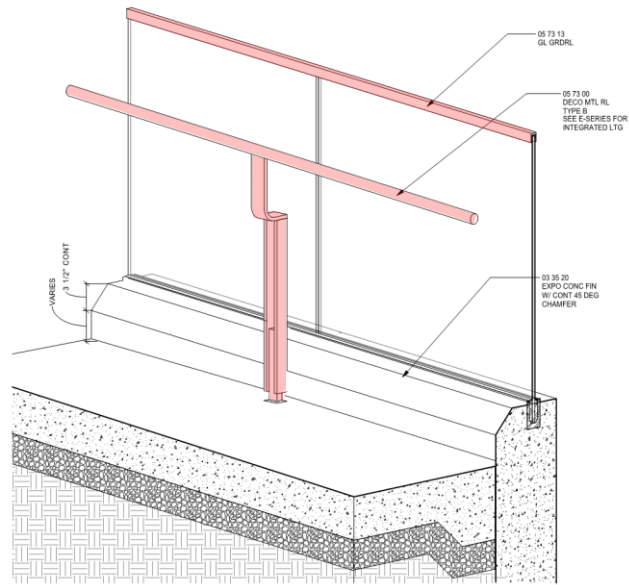
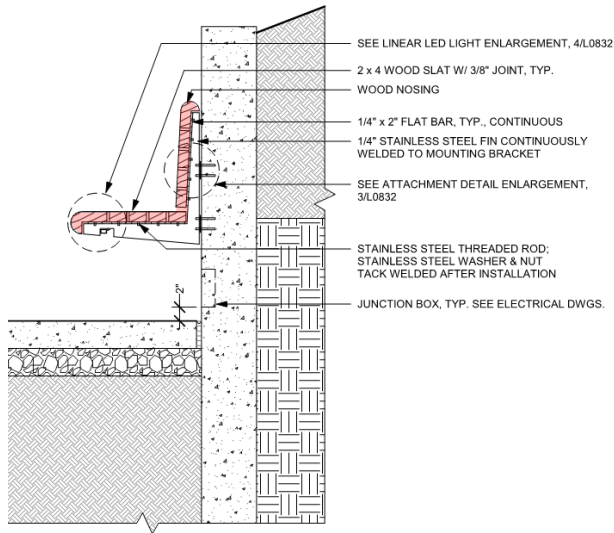


WHITE OAK ENTRY STOREFRONT  
SYSTEM

## MATERIALS

THE FOLGER SHAKESPEARE LIBRARY - U.S. COMMISSION OF FINE ARTS

16 APRIL 2020 | © KIERANTIMBERLAKE



IPE BENCHES



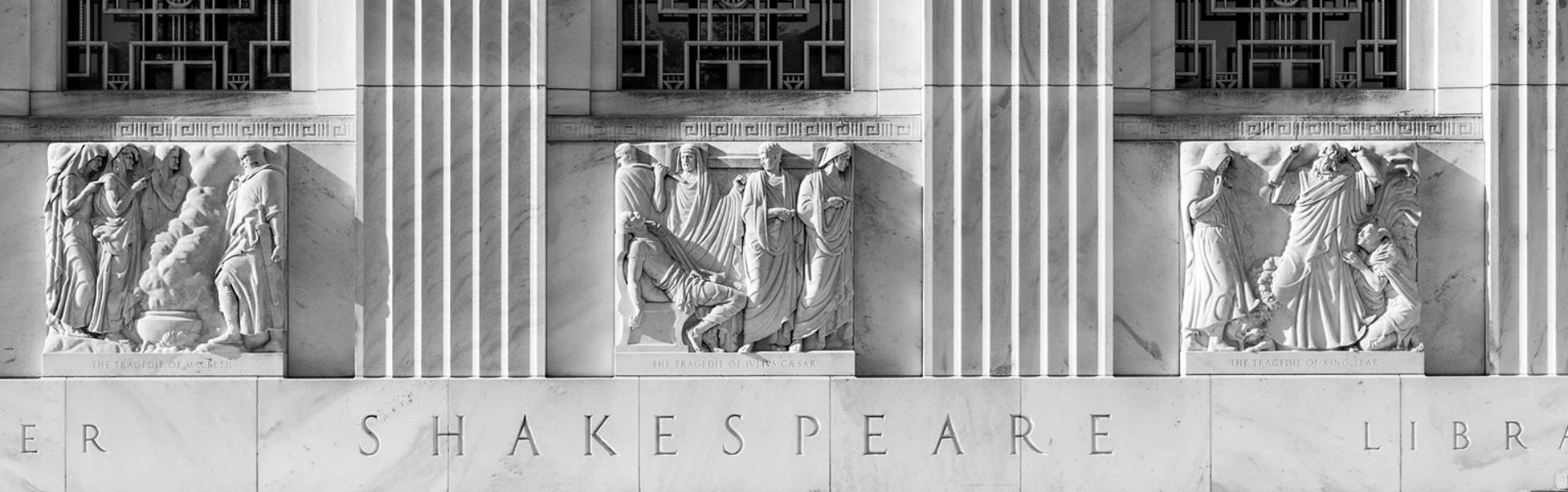
STAINLESS STEEL HANDRAILS AND POSTS

## MATERIALS

THE FOLGER SHAKESPEARE LIBRARY - U.S. COMMISSION OF FINE ARTS

16 APRIL 2020 | © KIERANTIMBERLAKE

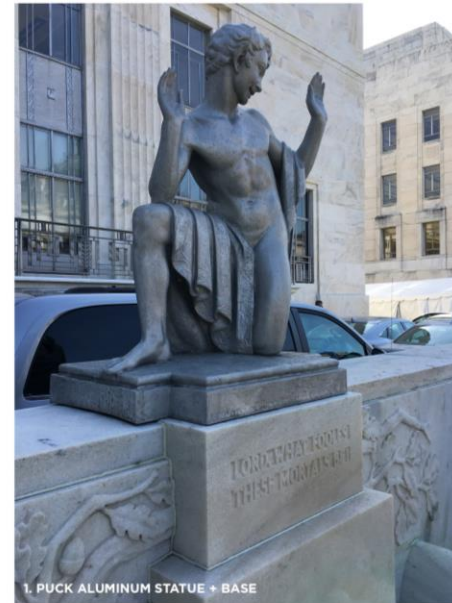
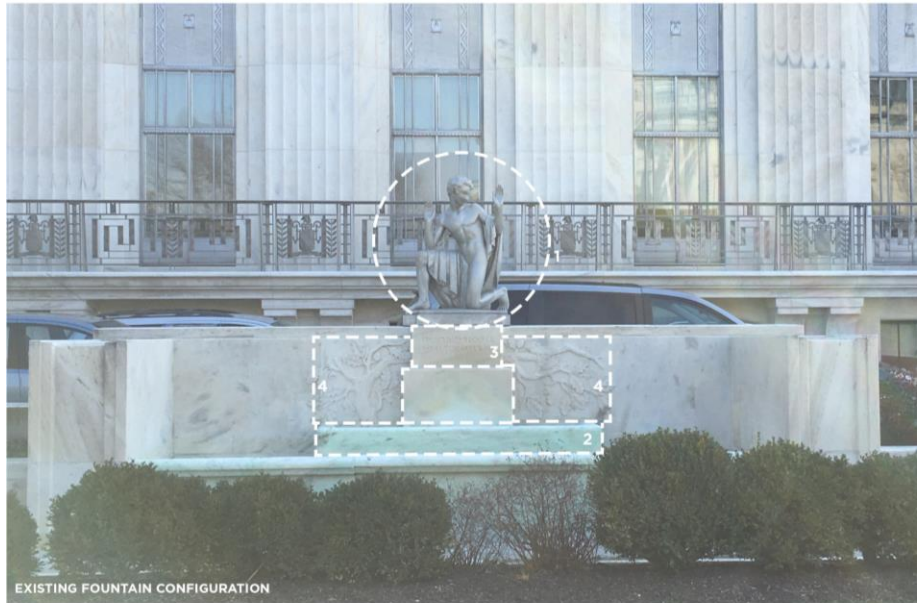




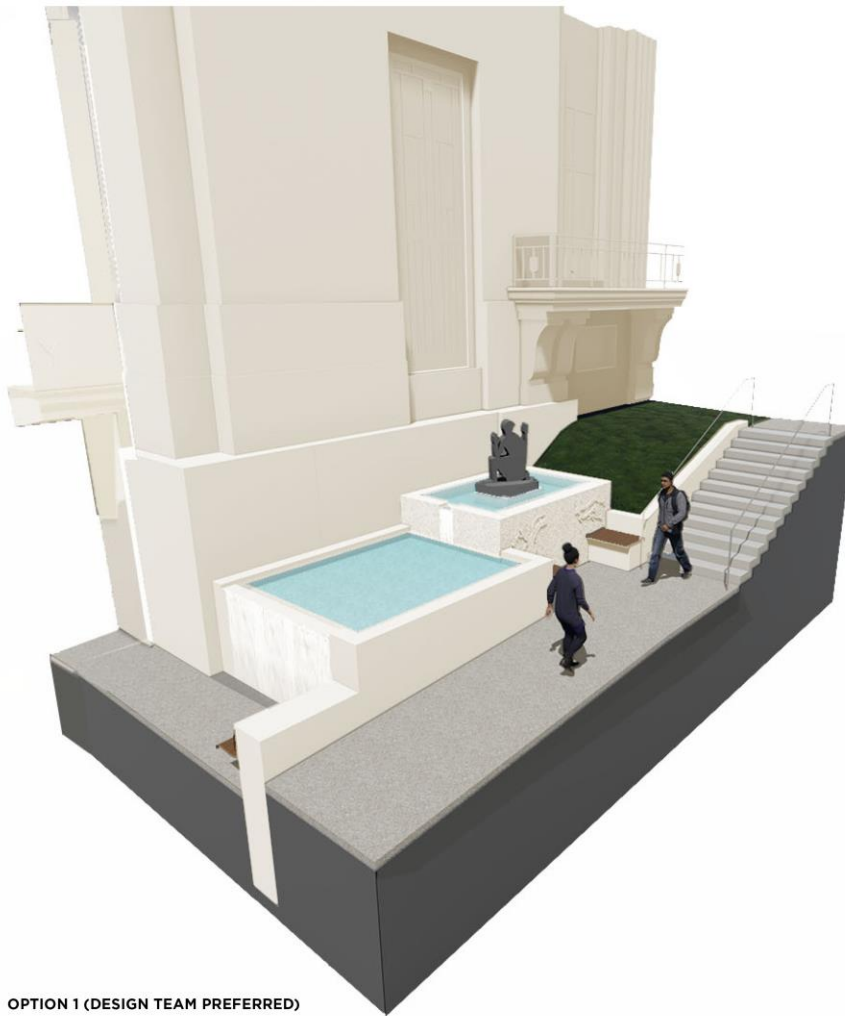
## Follow-up Topics

- ① ② East Capitol Frontage Railings and Signage
- ③ Typography
- ④ Pylon signs
- ⑤ Corner Treatment
- ⑥ Northeast Corner – “Juliet Balcony”
- ⑦ Materials
- ⑧ Puck Fountain

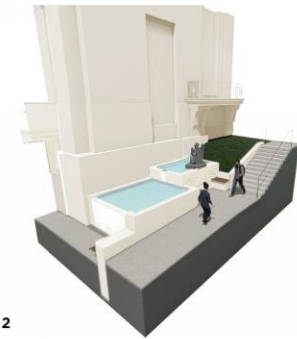
“Finally, the Commission members requested that the original pedestal for the Puck sculpture be incorporated in its new location.”







OPTION 1 (DESIGN TEAM PREFERRED)



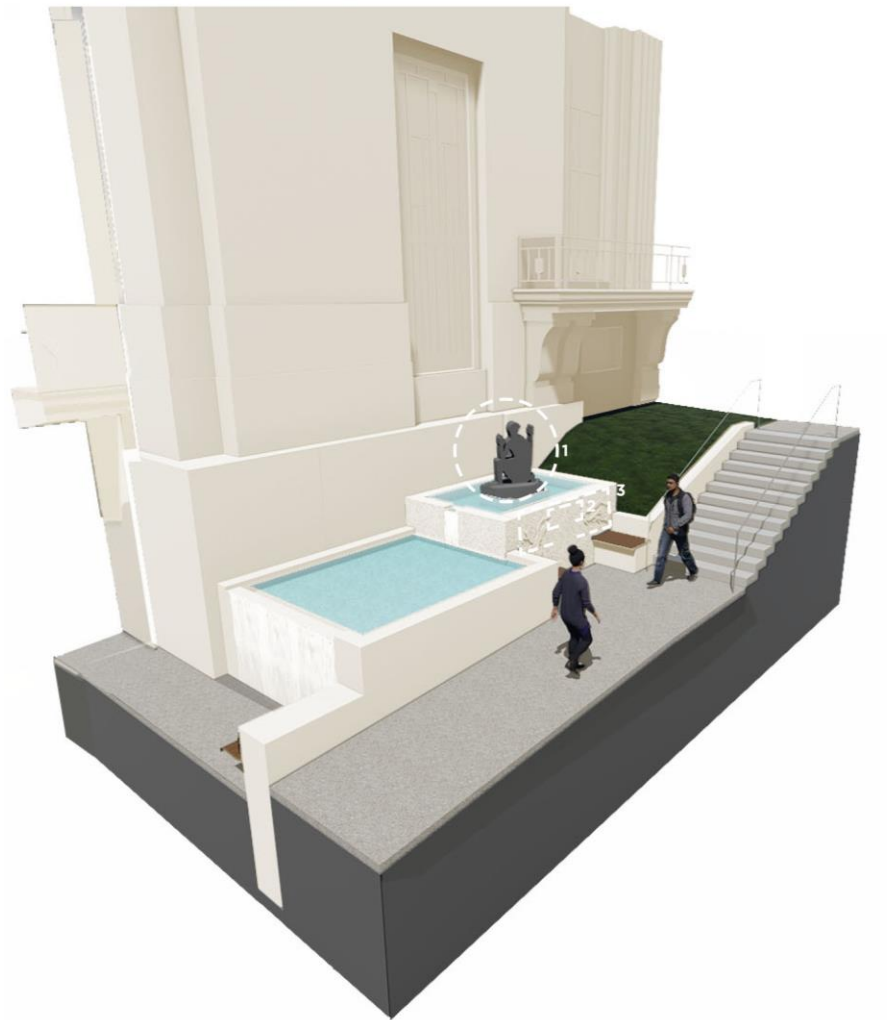
OPTION 2



OPTION 3



OPTION 4



1. ALUMINUM PUCK STATUE + BASE

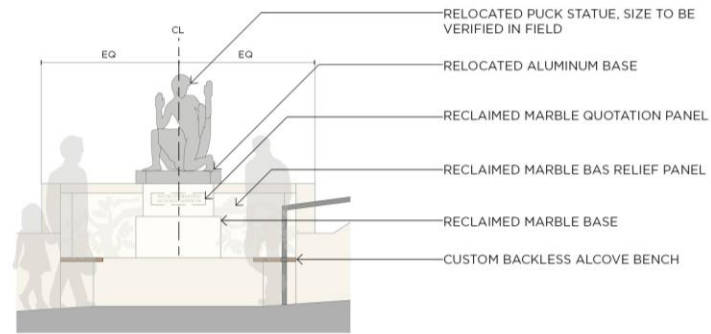


2. INSCRIBED MARBLE - QUOTE

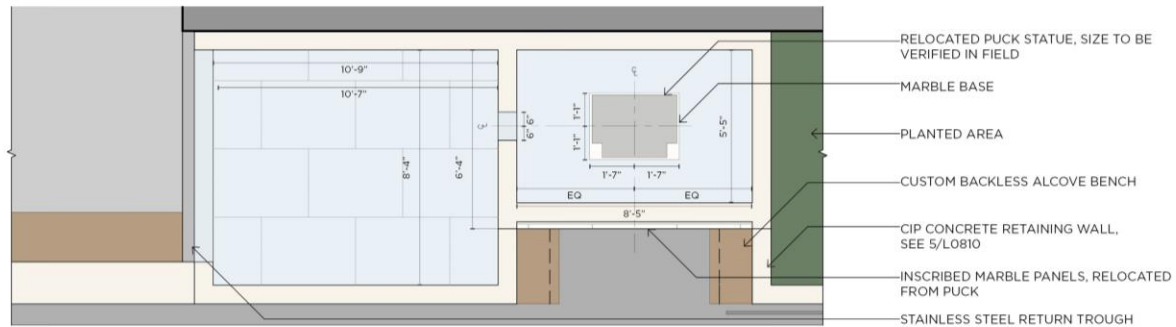


3. BAS RELIEF MARBLE - VINES + LEAVES

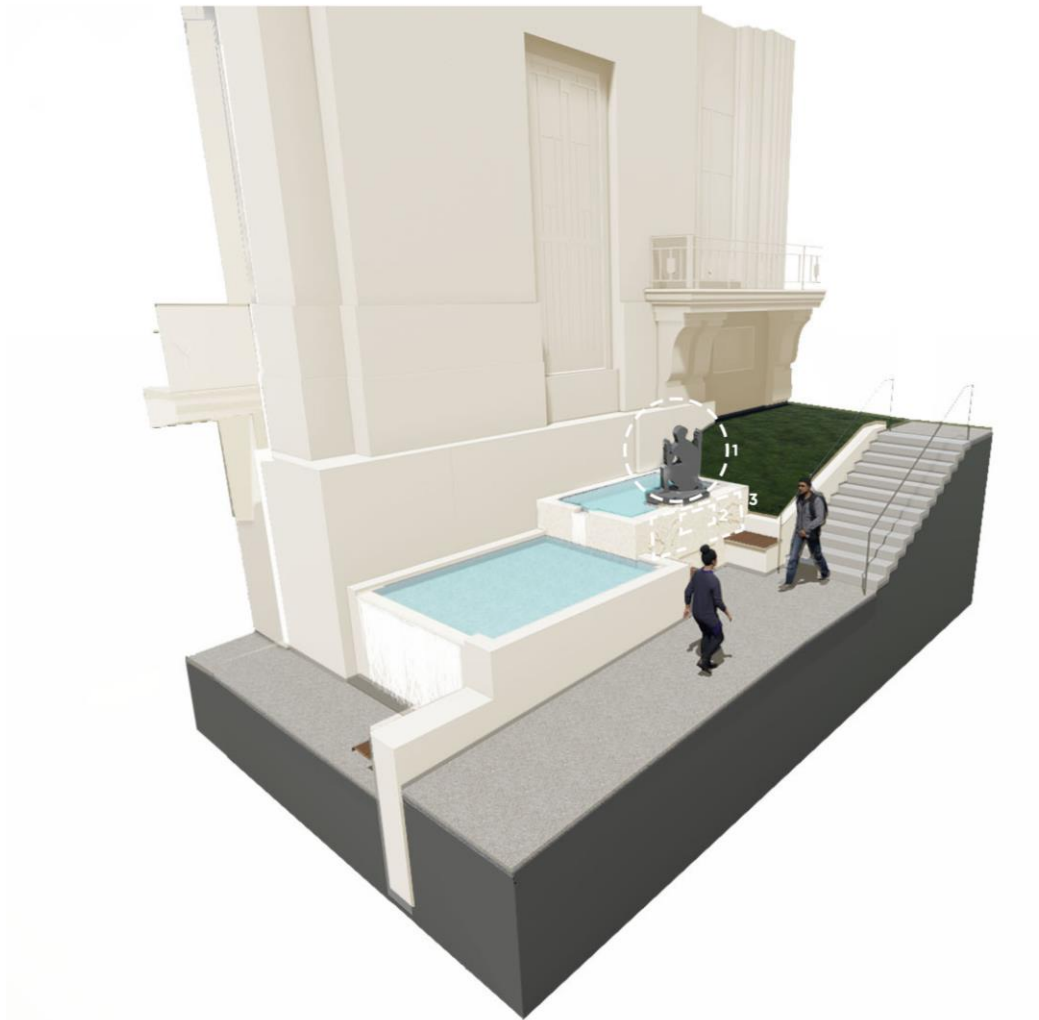




**ELEVATION**  
SCALE: 1/4"=1'-0"



**FOUNTAIN KEY PLAN**  
SCALE: 1/4" = 1'-0"



1. ALUMINUM PUCK STATUE + BASE

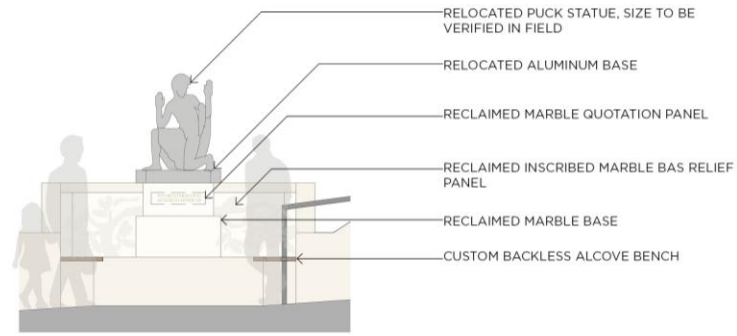


2. INSCRIBED MARBLE - QUOTE

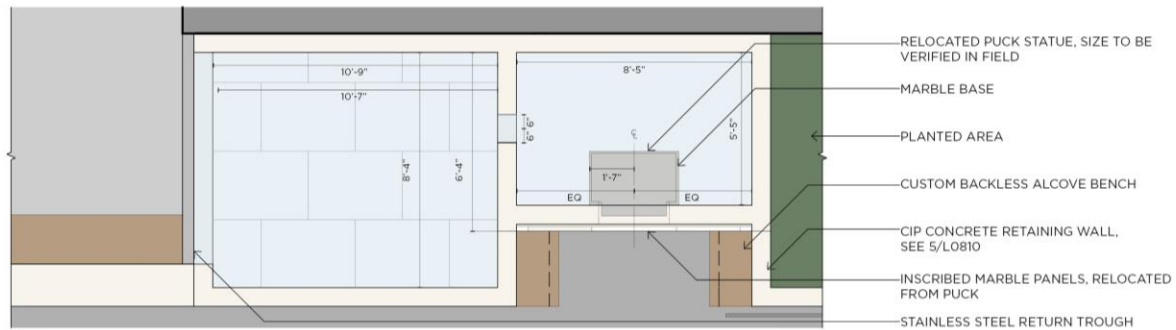


3. BAS RELIEF MARBLE - VINES + LEAVES





**ELEVATION**  
SCALE: 1/4"=1'-0"



**FOUNTAIN KEY PLAN**  
SCALE: 1/4" = 1'-0"



1. ALUMINUM PUCK STATUE + BASE



2. INSCRIBED MARBLE - QUOTE

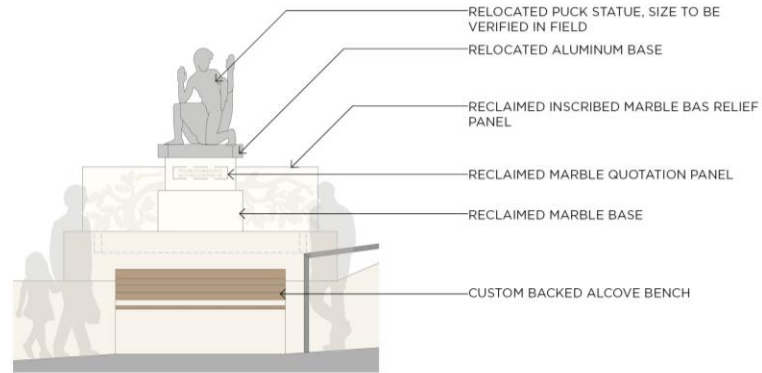


3. BAS RELIEF MARBLE - VINES + LEAVES

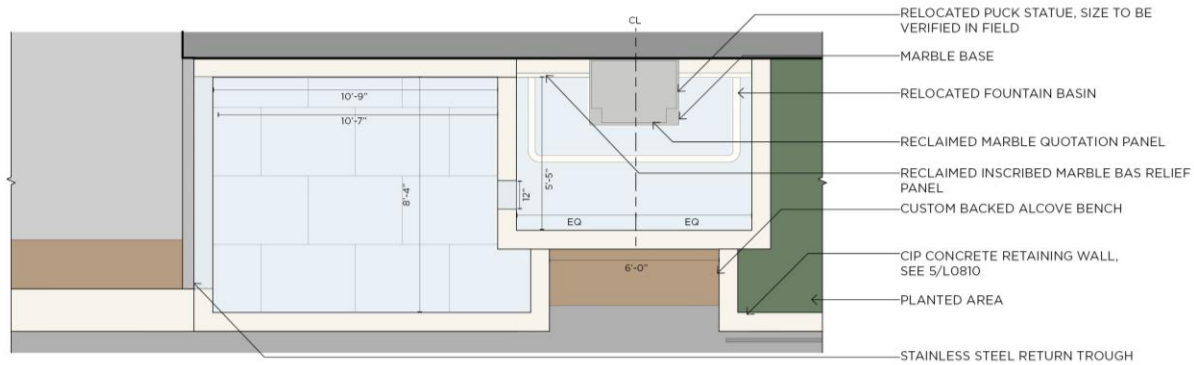


4. FOUNTAIN BASIN

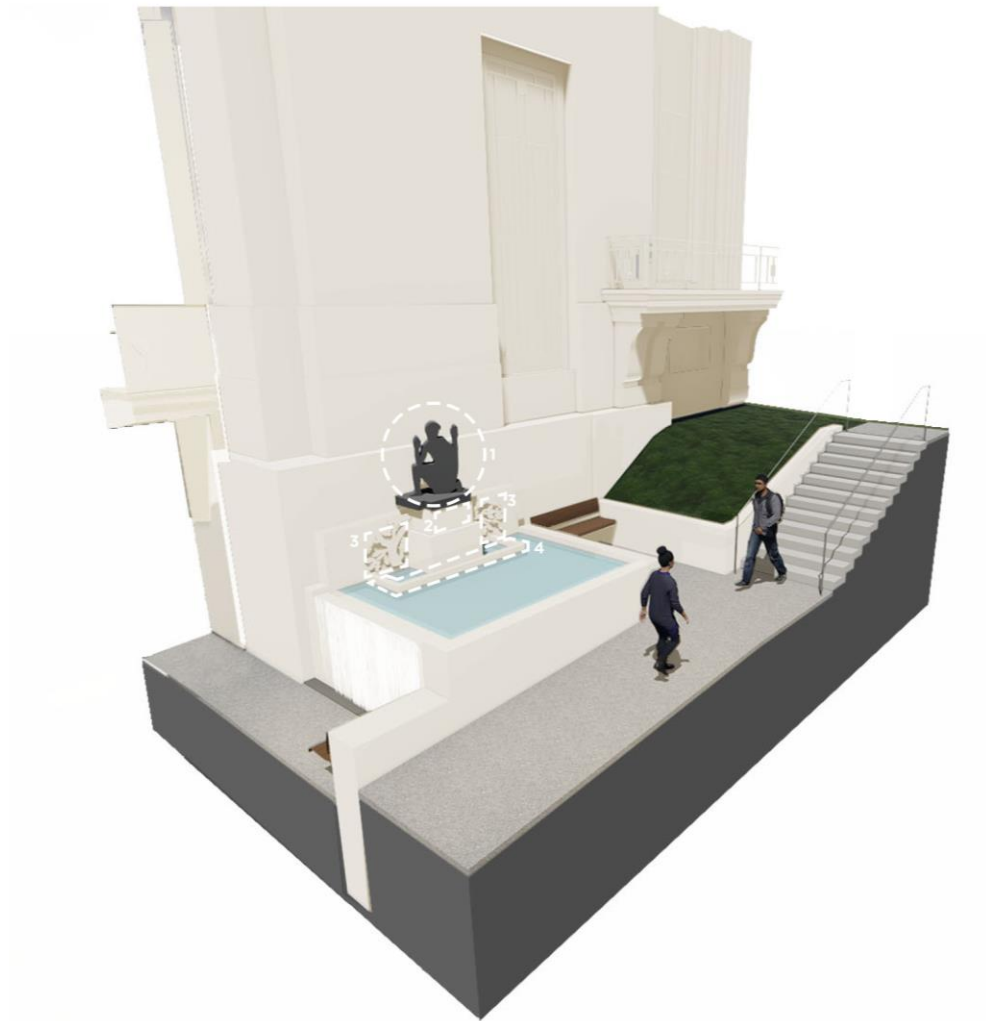




**ELEVATION**  
SCALE: 1/4"=1'-0"



**FOUNTAIN KEY PLAN**  
SCALE: 1/4" = 1'-0"



1. ALUMINUM PUCK STATUE + BASE



2. INSCRIBED MARBLE - QUOTE

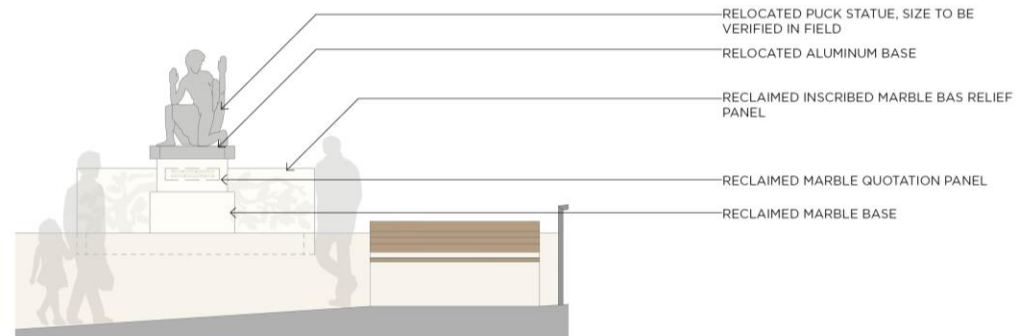


3. BAS RELIEF MARBLE - VINES + LEAVES

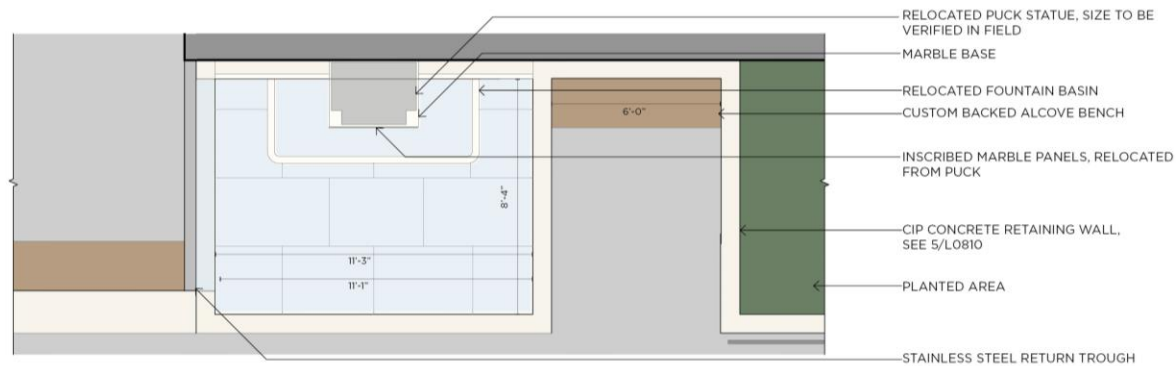


4. FOUNTAIN BASIN

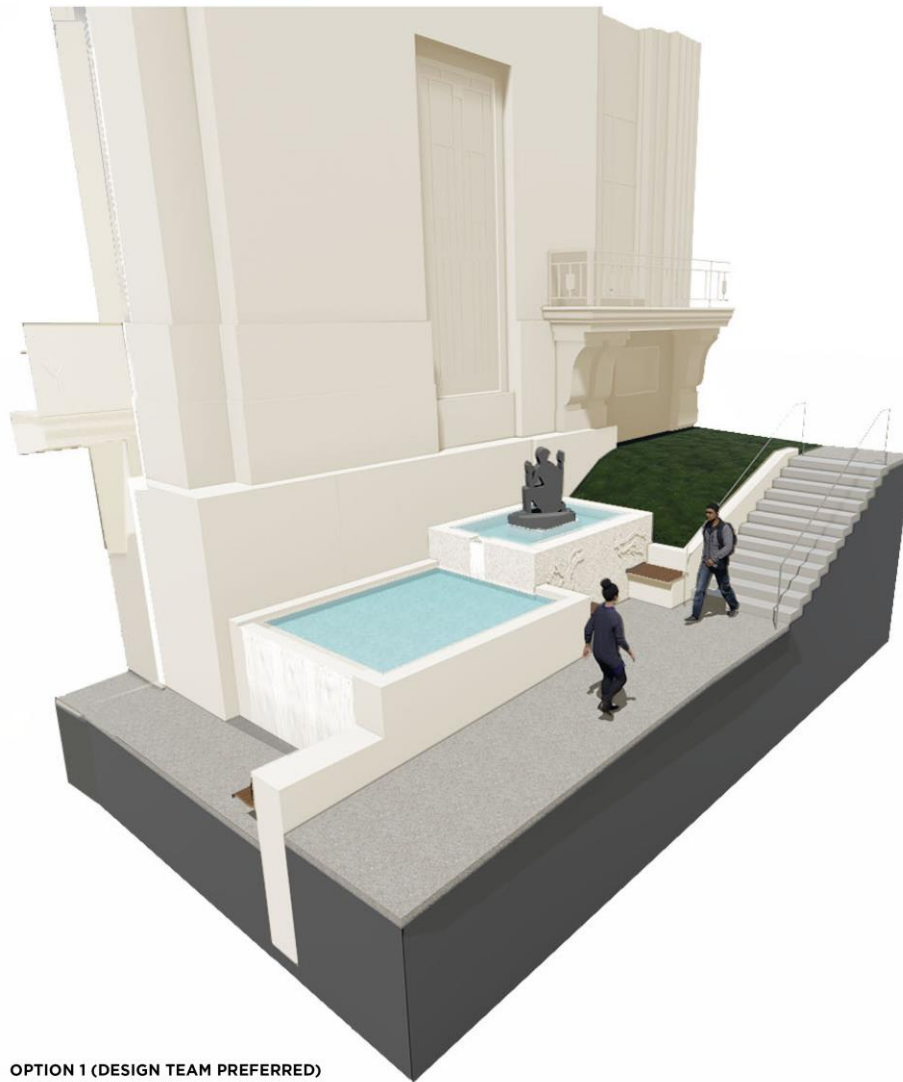




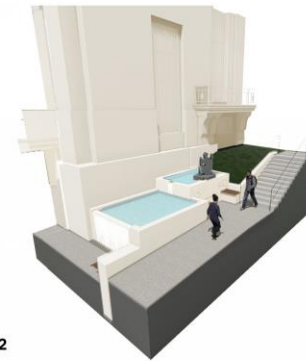
**ELEVATION**  
SCALE: 1/4"=1'-0"



**FOUNTAIN KEY PLAN**  
SCALE: 1/4" = 1'-0"



OPTION 1 (DESIGN TEAM PREFERRED)



OPTION 2



OPTION 3

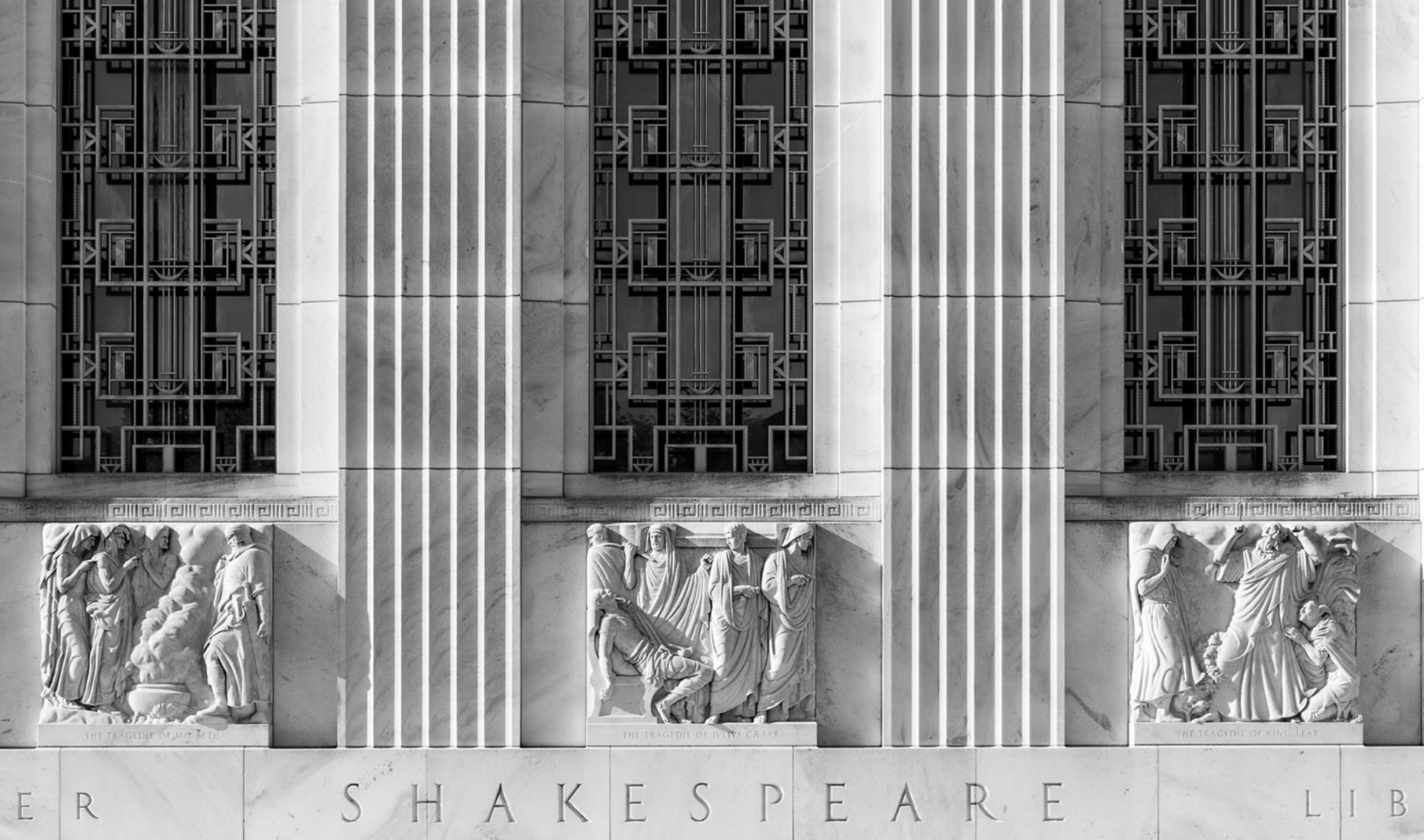


OPTION 4





**PROPOSED FOUNTAIN DESIGN VIEW FROM GARDEN**  
THE FOLGER SHAKESPEARE LIBRARY - U.S. COMMISSION OF FINE ARTS



# DISCUSSION